



ISSUE

Issued for Permit  
08.05.2016

PROJECT: 16-018

## Hampton Inn &amp; Suites

New Stanton, PA 15672

OWNER

Stanton Hospitality LLC

52 Blueberry Lane,  
Grove City, PA 16127

THESE DRAWINGS ARE FOR REVIEW OF DESIGN AND SCOPE DESCRIPTION ONLY. NO REPRESENTATION IS MADE TO THE ACCURACY OF THE DRAWINGS WITH RESPECT TO EXISTING DIMENSIONS OR CONDITIONS. ALL CONSULTANTS AND CONTRACTORS MUST VERIFY ANY AND ALL DIMENSIONS AND CONDITIONS WHICH ARE CRITICAL TO THEIR WORK. THESE DRAWINGS ARE INSTRUMENTS OF SERVICE AND ARE THE INTELLECTUAL PROPERTY OF JMAC ARCHITECTS. ANY UNAUTHORIZED USE OR REPRODUCTION IS PROHIBITED.

[illegible]

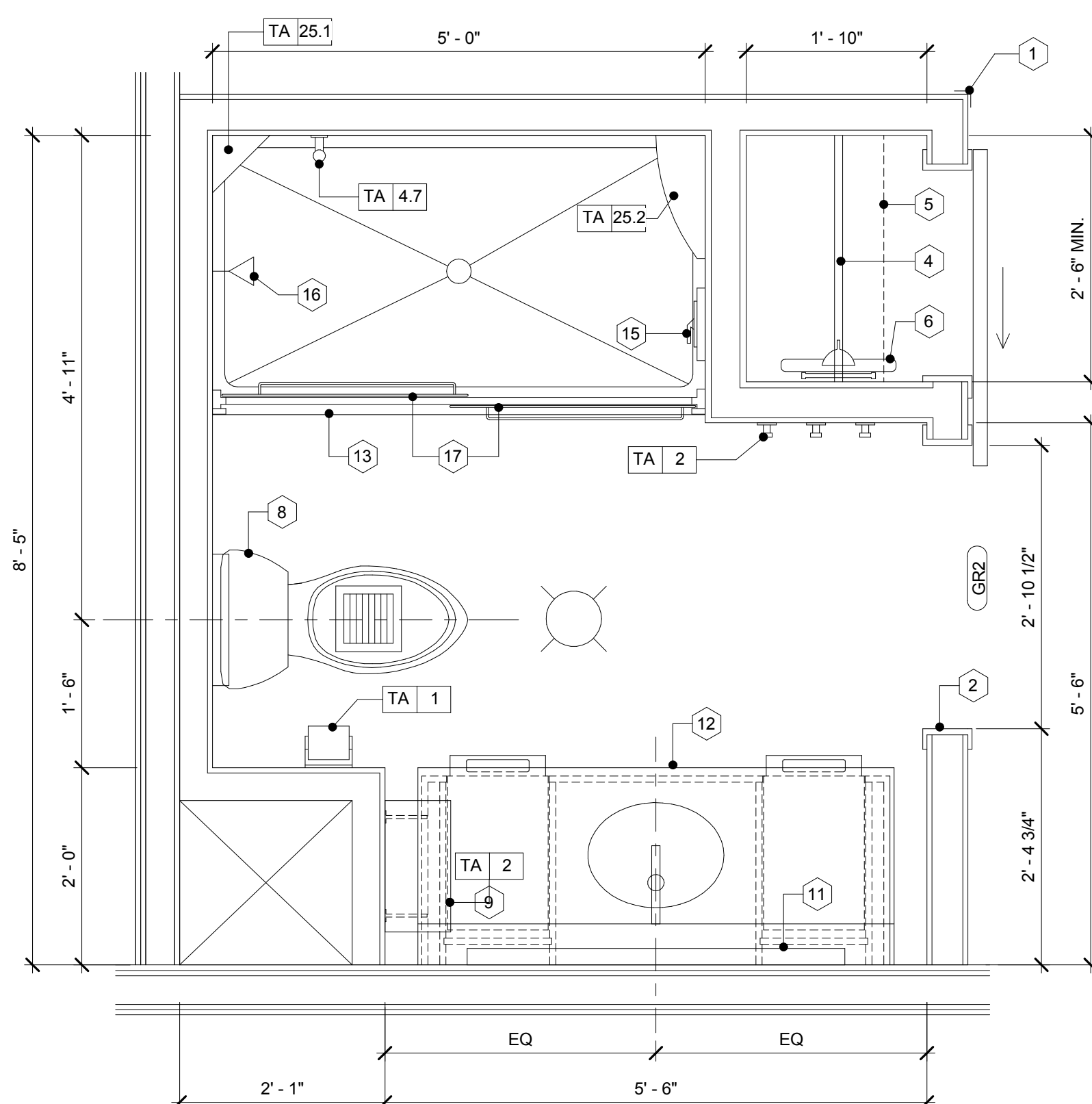
No.	Issue Date	Project Status
-----	------------	----------------

## Enlarged Bathroom Plans, Elevations and Details

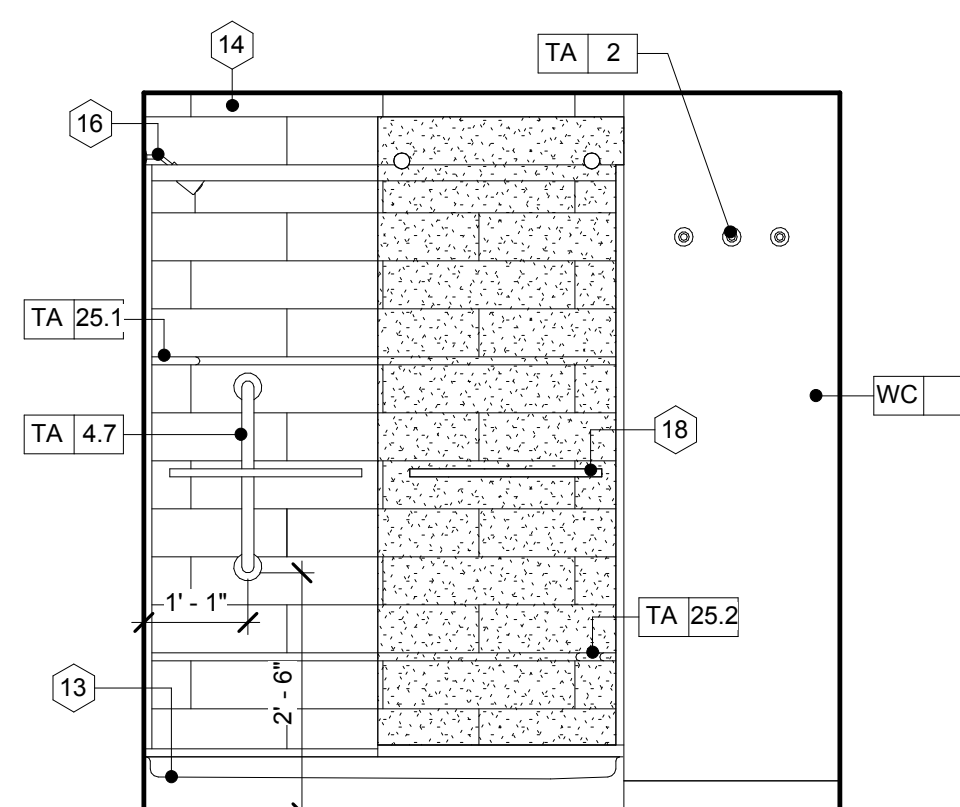
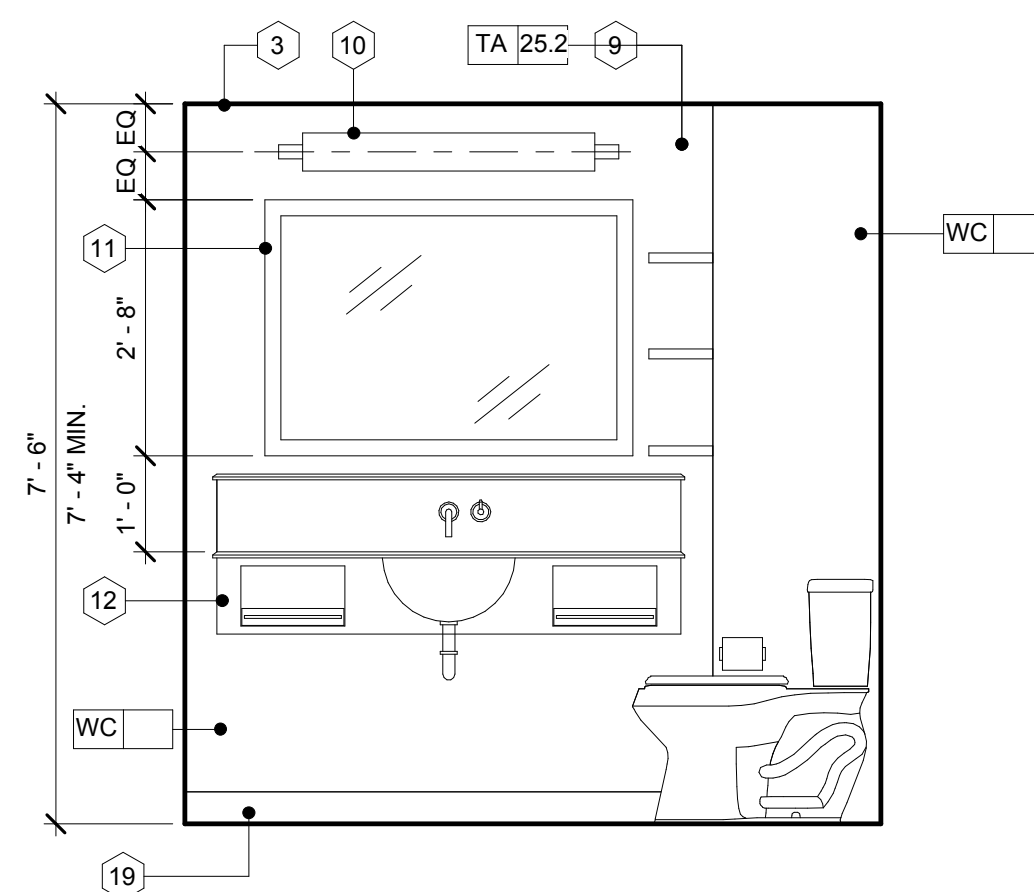
As indicated

A-531

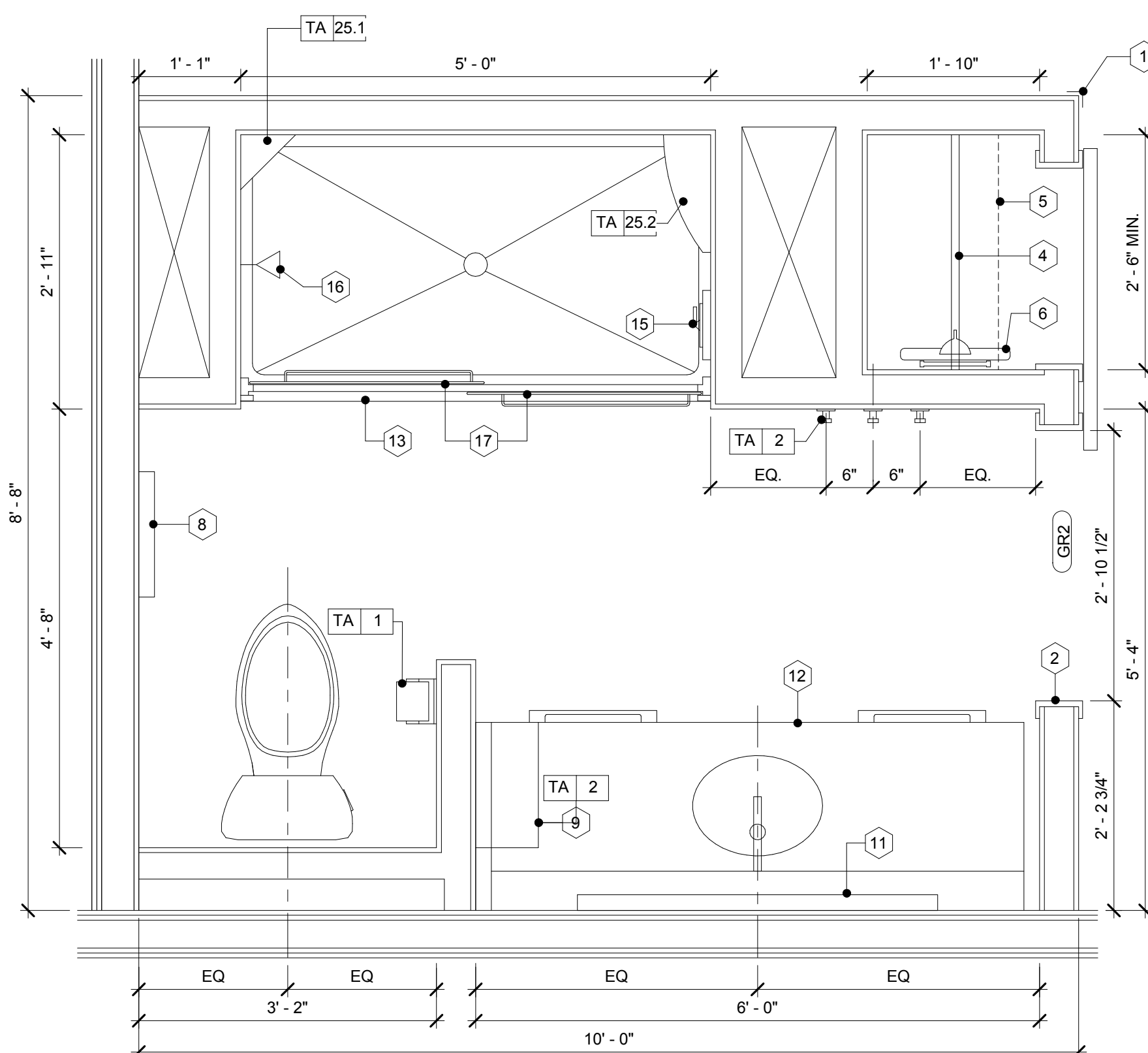
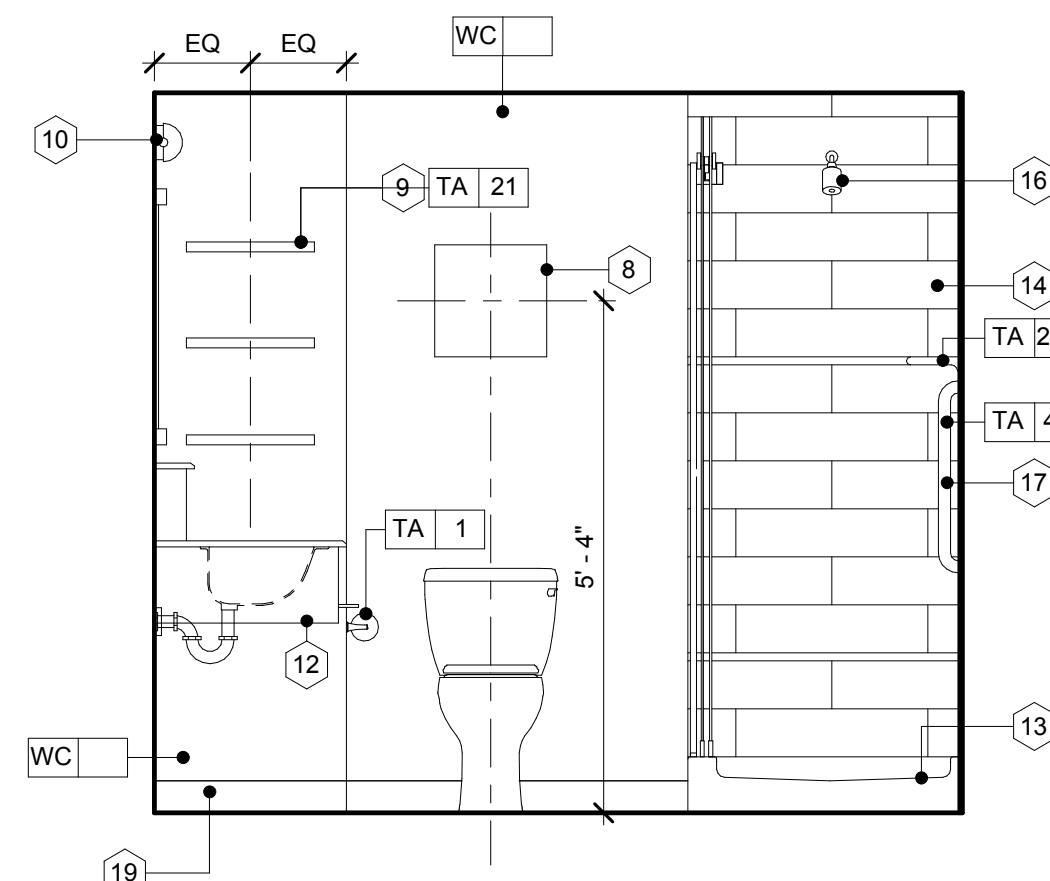
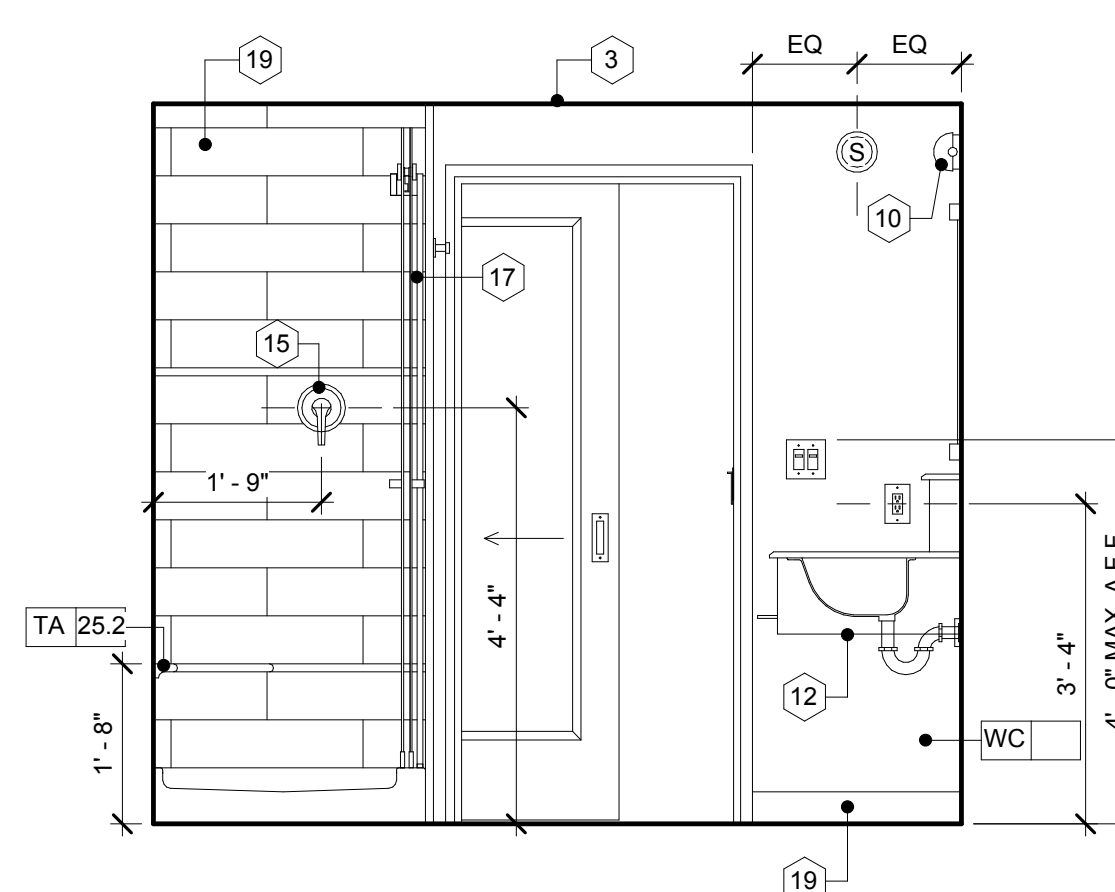
© 2016 JMAC Architects



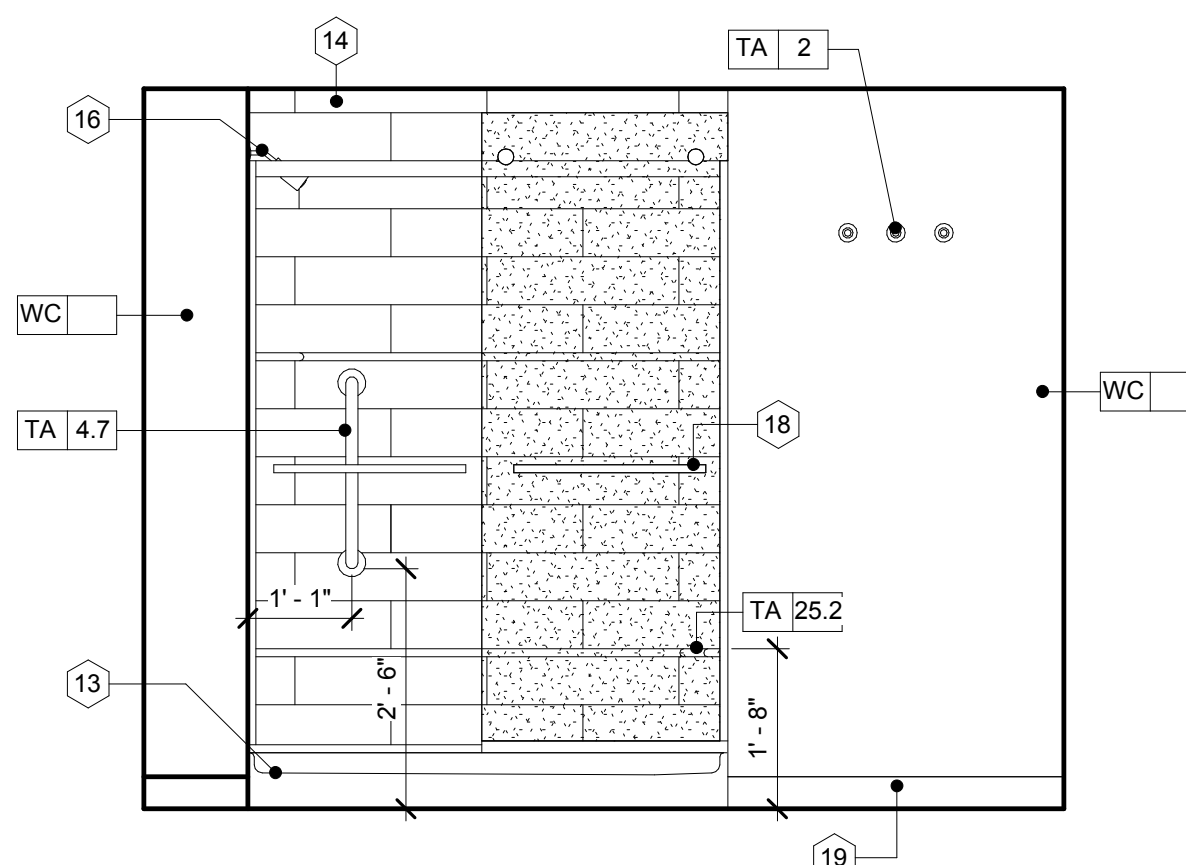
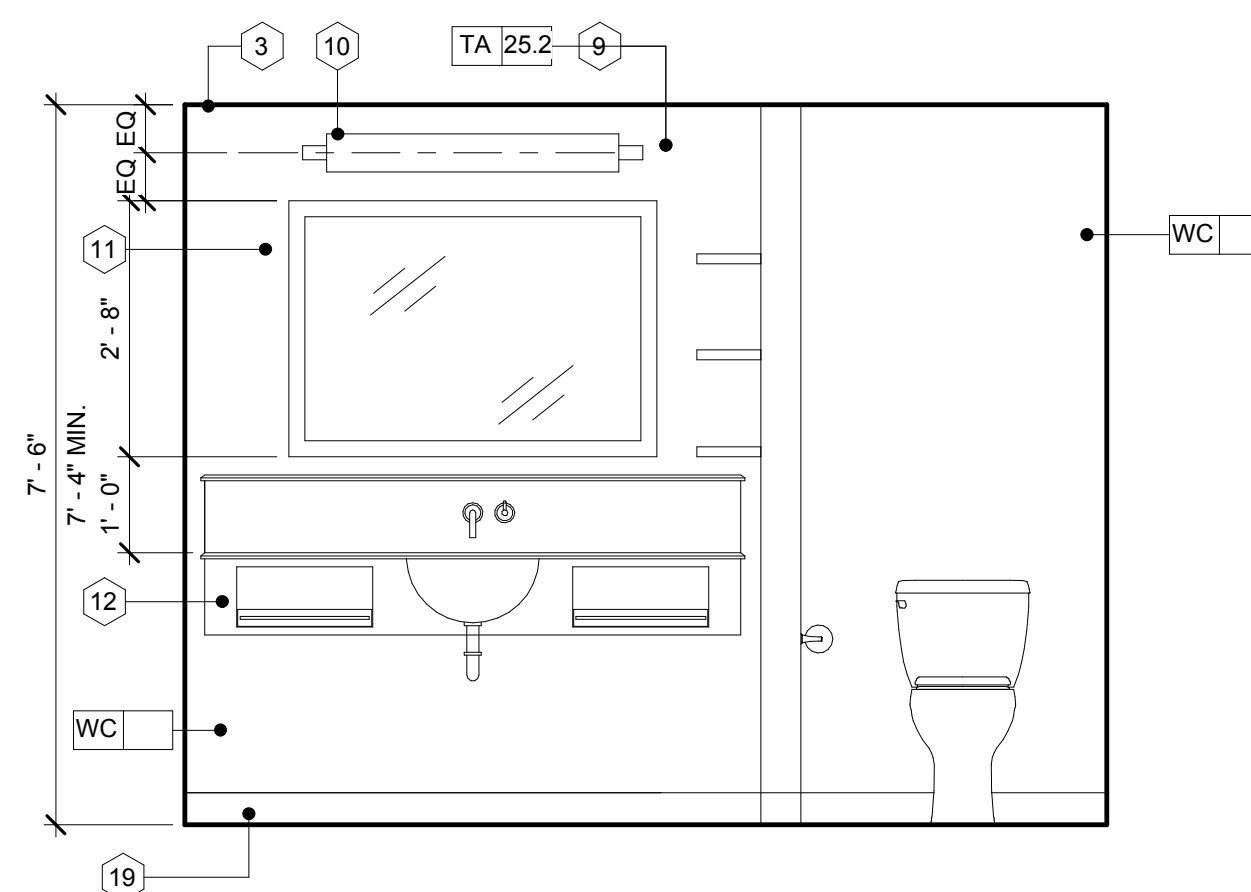
ENLARGED PLAN - TYPICAL 12'-0"  
GUESTROOM BATHROOM W/ SHOWER  
1 3/4" = 1'-0"



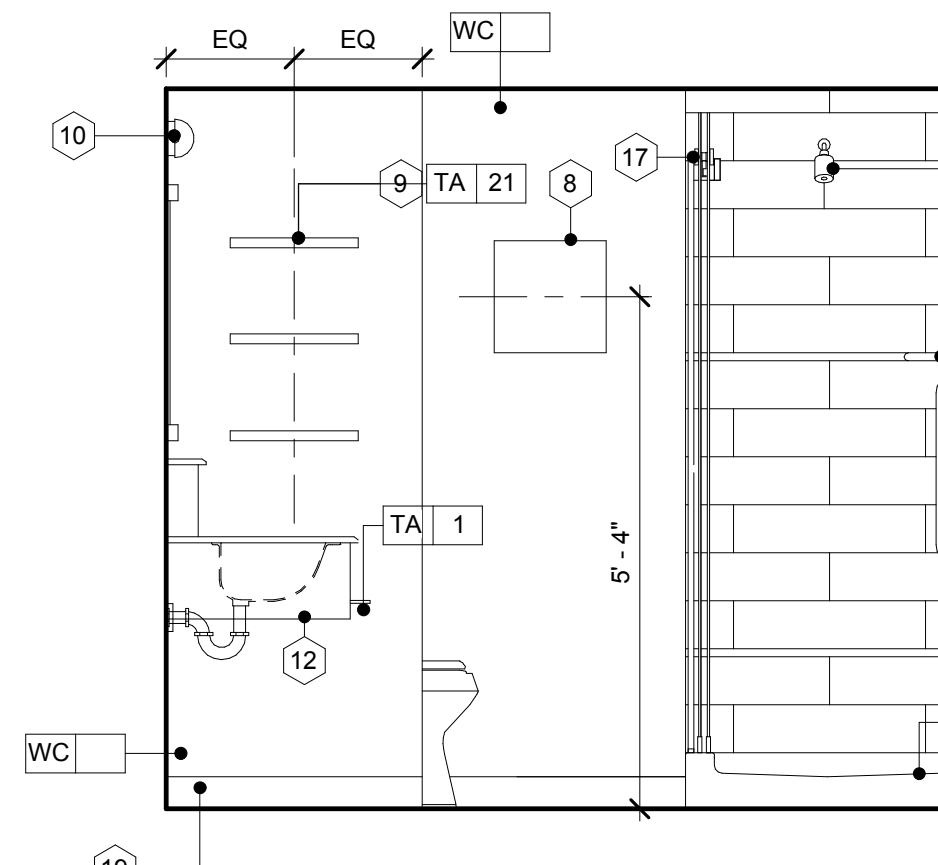
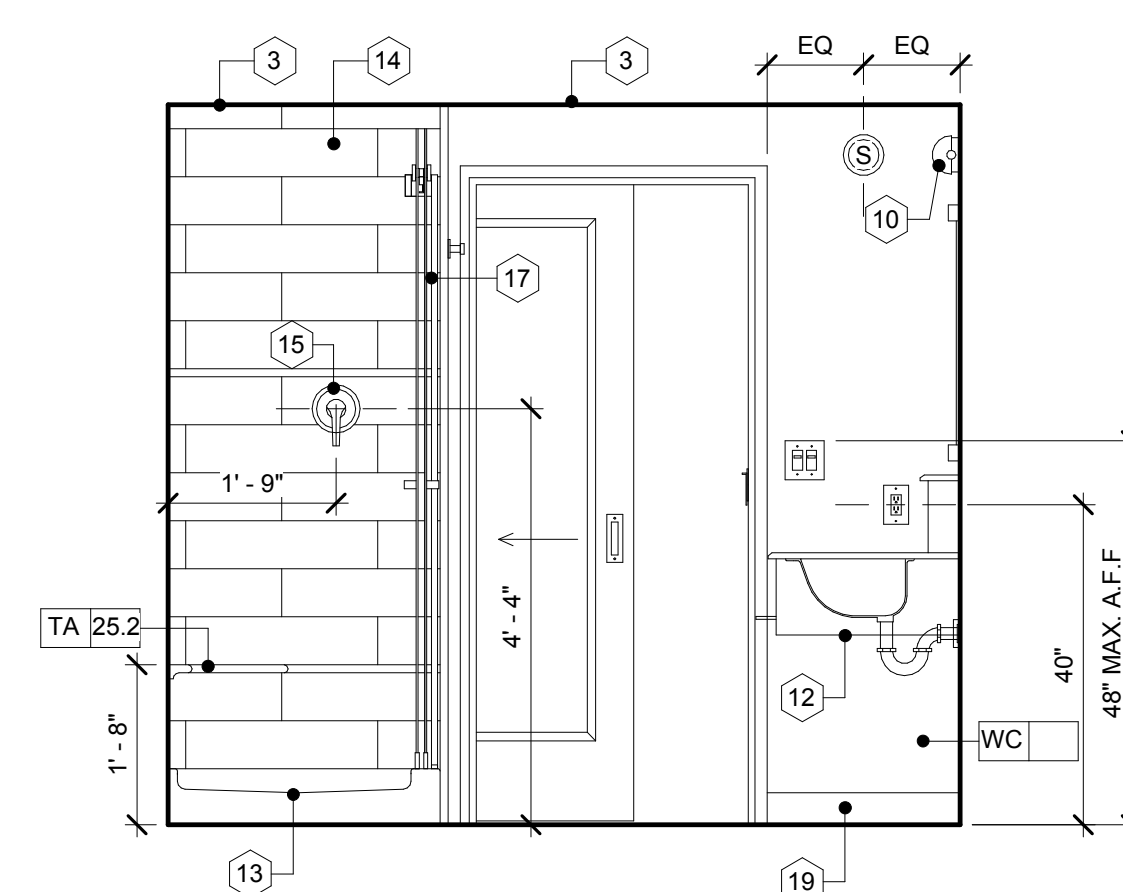
INTERIOR ELEVATIONS - TYPICAL  
12'-0" GUESTROOM BATH  
② 1/2" = 1'-0"



ENLARGED PLAN - TYPICAL 14'-0"  
3 GUESTROOM BAHTROOM W/ SHOWER  
3/4" = 1'-0"



INTERIOR ELEVATIONS - TYPICAL  
14'-0" GUESTROOM BATH  
④ 1/2" = 1'-0"



## BATHROOM KEYNOTES

- 1 FULL HEIGHT CORNER GUARD, NO EXPOSED FASTENERS, CO TO COORDINATE WITH WALL
- 2 CASED OPENING - PAINTED
- 3 MOISTURE RESISTANT GYP. BD. (TYP.)
- 4 CLOSET ROD TUBING, MOUNT AT 60" A.F.F IN TYP. GUESTROOM, AT AVAILABLE GUESTROOMS PROVIDE HALF THE CLOSET ROD LENGTH AT 74" A.F.F. PROVIDE ACCESSIBLE TUBING ON MOST ACCESSIBLE SIDE OF CLOSET
- 5 TYP. GUESTROOMS CLOSET WOOD SHELF W/ HARDWOOD EDGE AT 68" A.F.F. IN ACCESSIBLE GUESTROOMS WITH MOBILITY FEATURES, PROVIDE HALF THE CLOSET SHELF AT 48" A.F.F. PROVIDE ACCESSIBLE HANG ROD ON MOST ACCESSIBLE SIDE OF THE CLOSET - REFER TO CLOSET DETAIL
- 6 IRONING BOARD
- 7 NOT USED
- 8 ARTWORK
- 9 FLOATING TOWEL SHELVES (TA-21)
- 10 WALL MOUNTED LIGHT FIXTURE
- 11 FRAMED MIRROR
- 12 TYPICAL GUEST VANITY - REFER TO GUESTROOM DRAWINGS FOR GUEST ROOM FURNITURE SPECIFICATIONS
- 13 APPROVED SHOWER PAN - REFER TO HAMPTON STANDARD
- 14 APPROVED SHOWER SURROUND - REFER TO HAMPTON STANDARDS
- 15 CONTROL VALVE
- 16 SHOWER HEAD, ROUGH IN HEIGHT BETWEEN 6'-0" AND 7'-0" ABOVE FINISH
- 17 SLIDING GLASS SHOWER DOOR - CUSTOM HEIGHT
- 18 SHOWER BAR/ DRAWER PULL - TO BE USED AS SECONDARY TOWEL HOLDER
- 19 VINYL BASE
- 20 BATHTUB - REFER TO HAMPTON STANDARDS
- 21 FLUSH LEVER MUST BE POSITIONED ON OPEN SIDE OF WATER CLOSET AS SHOWN
- 22 MIRROR COMPLAINT WITH ACCESSIBILITY REQS. MOUNT BOTTOM. OF GLASS AT 40" MAX. A.F.F.
- 23 TYPICAL ACCESSIBLE GUEST VANITY-REFER TO GUESTROOM DRAWINGS FOR GUEST ROOM FURNITURE SPECIFICATIONS
- 24 PROTECT PIPES PER ACCESSIBILITY REQUIREMENTS
- 25 ACCESSIBLE SHOWER FLOOR NOT TO EXCEED 1/48 IN ANY DIRECTION
- 26 PROVIDE INSULATED FLOOR DRAIN IN THIS LOCATION FOR GUEST BATHS EQUIPPED WITH ROLL-IN SHOWER DRAIN WITH 12" DIA. DRAIN FLOOR SLOPE NOT TO EXCEED 1/48 IN ANY DIRECTION. PROVIDE TRAP PRIMER - COMPLY ALSO WITH LOCAL CODE WHERE APPLICABLE
- 27 CONTROL VALVE LOCATION FOR ACCESSIBLE ROOMS WITH MOBILITY FEATURES
- 28 ACCESSIBLE ADJUSTABLE SHOWER HEAD FOR ACCESSIBLE ROOMS WITH MOBILITY FEATURES - REFER TO HAMPTON STANDARDS
- 29 PADDED REMOVABLE ACCESSIBLE TUB SEAT - TO BE 15"-16" DEEP AND AT 17"-19" ABOVE FINISHED FLOOR WHEN IN USE
- 30 ACCESSIBLE BATH TUB
- 31 REFER TO TYPICAL BATH TUB DRAWING
- 32 PROVIDE ADDITIONAL TOWEL HOOK WITH TUB OPTION